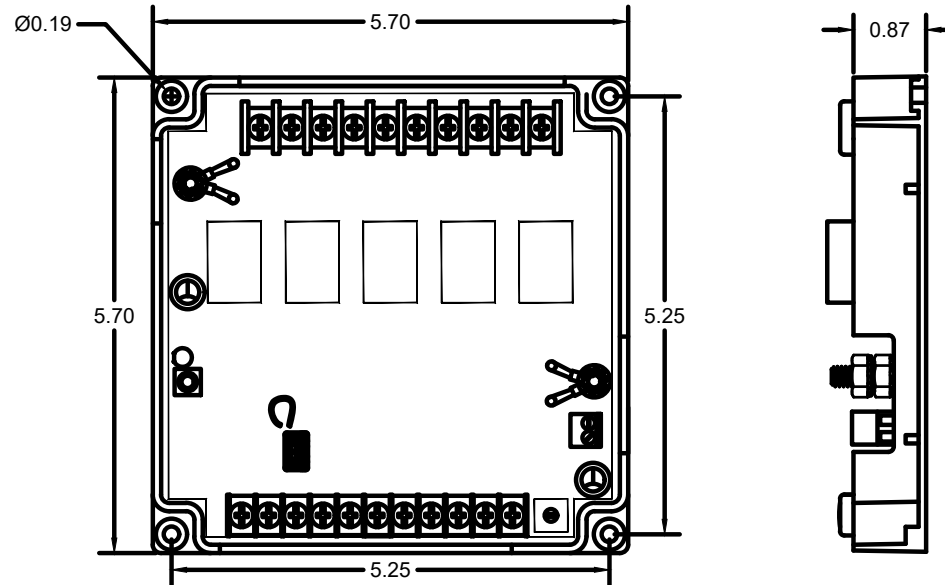


Specifications

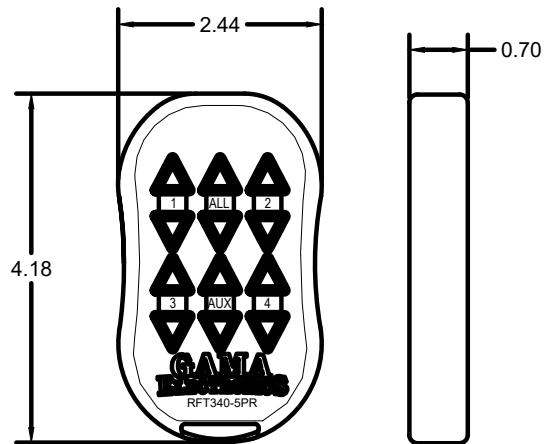
- Input voltage: 12VDC with reverse polarity protection.
- Operating temperature range: 0°F to 160°F.
- Typical transmit range is 100 feet.

| | | | | |
|-----------|------------------|---------|------|---------|
| SIZE | RF340-5PR-ASL | | | REV. |
| A | | | | 0 |
| REVISIONS | | | | |
| LET. | WAS | DATE | APP. | ENTERED |
| O | ORIGINAL RELEASE | 2/26/24 | | |

Receiver



Waterproof Transmitter
(RFT340-5PR)

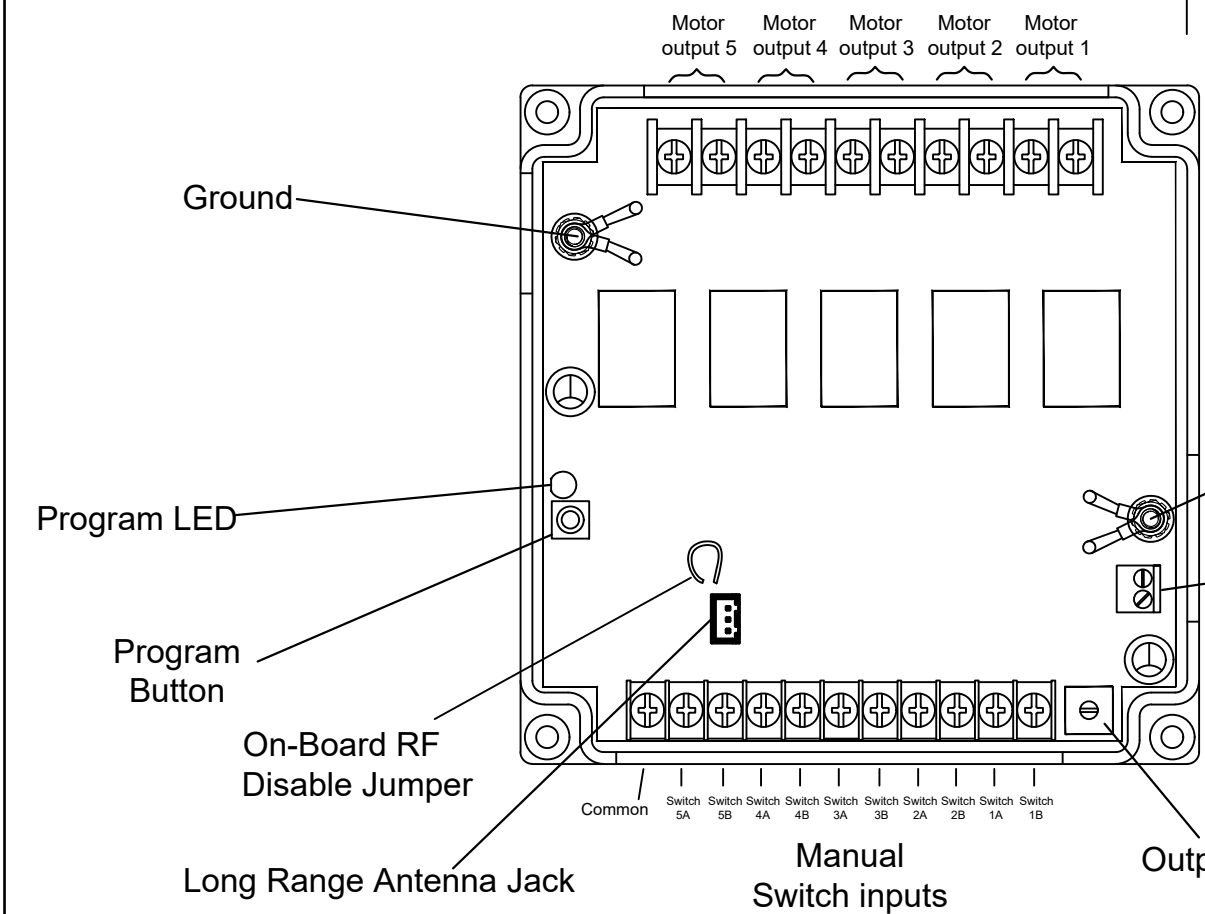


INFORMATION CONTAINED HEREIN IS PROPRIETARY INFORMATION OF GAMA ELECTRONICS INC. THE DISSEMINATION, USE OR DUPLICATION OF THIS INFORMATION, FOR ANY PURPOSE OTHER THAN THAT FOR WHICH THE INFORMATION IS PROVIDED, IS PROHIBITED, EXCEPT BY EXPRESS WRITTEN PERMISSION.

DECIMAL TOLERANCE UNLESS OTHERWISE SPECIFIED:
 LINEAR:
 .XXXXX ± 0.005
 .XXXX ± 0.01
 .XXX ± 0.03
 .XX ± 0.15
 X/X ± 1/32
 X ± 1/16
 ANGULAR:
 .XXXX ± 0.1°
 .XX ± 0.1°
 X ± 1°
 THIS DRAWING IN ACCORDANCE WITH DOD-STD-100 UNLESS OTHERWISE SPECIFIED.


| | | |
|--|-----------------|------------------------|
| All dimensions in inches. (unless otherwise noted) | | THIRD ANGLE PROJECTION |
|  GAMA Electronics, Inc. P.O. Box 1488, Crystal Lake, IL 60039 | | |
| NAME Remote Control | | |
| DRN JD | 2/26/24 | MATERIAL |
| RELEASED 2/26/24 | SHEET 1 OF 2 | |

| | | | | | |
|-----------|------------------|---------|------|---------|------|
| SIZE | RF340-5PR-ASL | | | | REV. |
| A | | | | | 0 |
| REVISIONS | | | | | |
| LET. | WAS | DATE | APP. | ENTERED | |
| O | ORIGINAL RELEASE | 2/26/24 | | | |



INFORMATION CONTAINED HEREIN IS PROPRIETARY INFORMATION OF GAMA ELECTRONICS INC. THE DISSEMINATION, USE OR DUPLICATION OF THIS INFORMATION, FOR ANY PURPOSE OTHER THAN THAT FOR WHICH THE INFORMATION IS PROVIDED, IS PROHIBITED, EXCEPT BY EXPRESS WRITTEN PERMISSION.

DECIMAL TOLERANCE UNLESS OTHERWISE SPECIFIED:
 LINEAR:
 .XXXXX ± 0.005
 .XXXX ± 0.01
 .XXX ± 0.03
 .XX ± 0.15
 X/X ± 1/32
 X ± 1/16
 ANGULAR:
 .XXXX ± 0.1°
 .XX ± 0.1°
 X ± 1°
 THIS DRAWING IN ACCORDANCE WITH DOD STD-100 UNLESS OTHERWISE SPECIFIED.

| | | |
|--|---------|------------------------|
| All dimensions in inches. (unless otherwise noted) | | THIRD ANGLE PROJECTION |
|  GAMA Electronics, Inc. P.O. Box 1488, Crystal Lake, IL 60039 | | |
| NAME Remote Control | | |
| DRN JD | 2/26/24 | MATERIAL |
| RELEASED 2/26/24 | | SHEET 2 OF 2 |